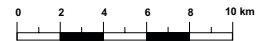


# Režim podzemných vôd








Stúpnutie piezometrickej výšky po 120 hodinách po kulminácii povodne v auguste 2002

M 1 : 350 000



## Vysvetlivky:

rozdiel hladín [m]

-  viac ako 2.75
-  2.25 až 2.75
-  1.75 až 2.25
-  1.25 až 1.75
-  0.75 až 1.25
-  0.25 až 0.75
-  do 0.25

 Konzultačná skupina  
**PODZEMNÁ VODA**  
spol. s r. o.

Obr. IV.7 Stúpnutie piezometrickej výšky po 120 hodinách po kulminácii povodne